

AUTOLIFT SYSTEM

INSTALLATION MANUAL FOR ADAPTER DUCATO X250/290

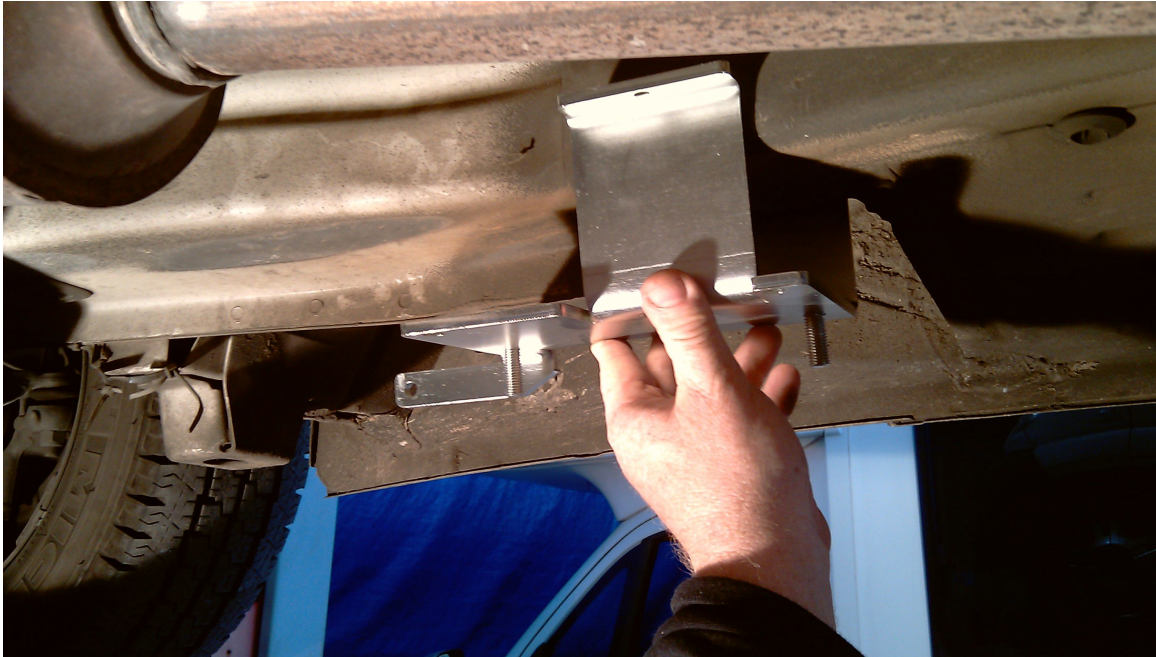
WATCH ALSO TUTORIAL VIDEO:



Please subscribe to our Youtube channel TESA AUTOLIFT SYSTEM and see all tutorial videos.

Front right adapter Ducato x250

Step 1:



Put the adapter most rear possible, if necessary remove any sealing material for a perfect adherence, use a bottle jack to stop the bracket in the correct position and make the 8mm side hole then fix with the bolt.

Step 2:



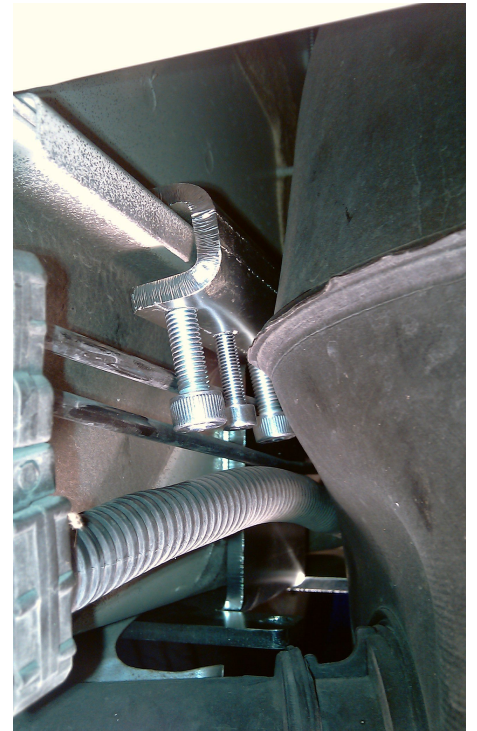
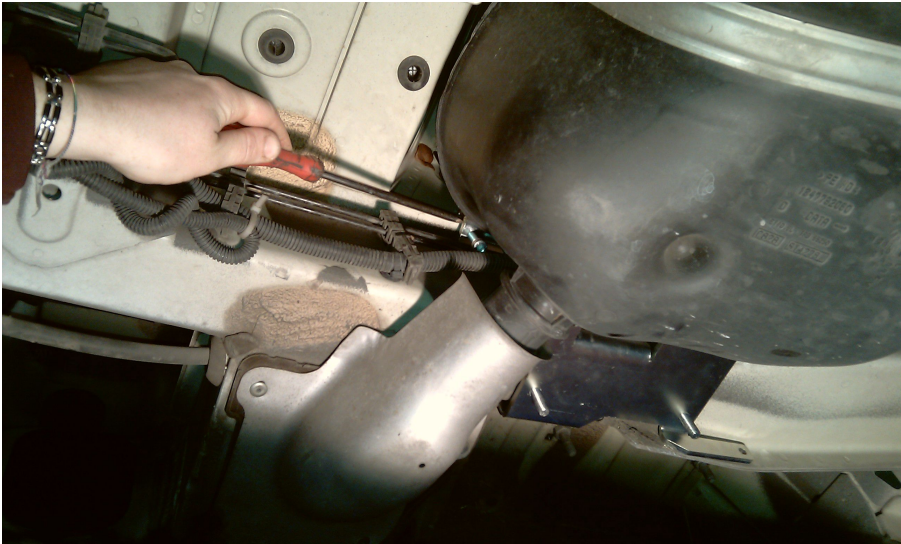
Apply the clamp

**JACK WITH MOTOR TO THE OUTSIDE OF THE VEHICLE AND
ROTATION FRONT**

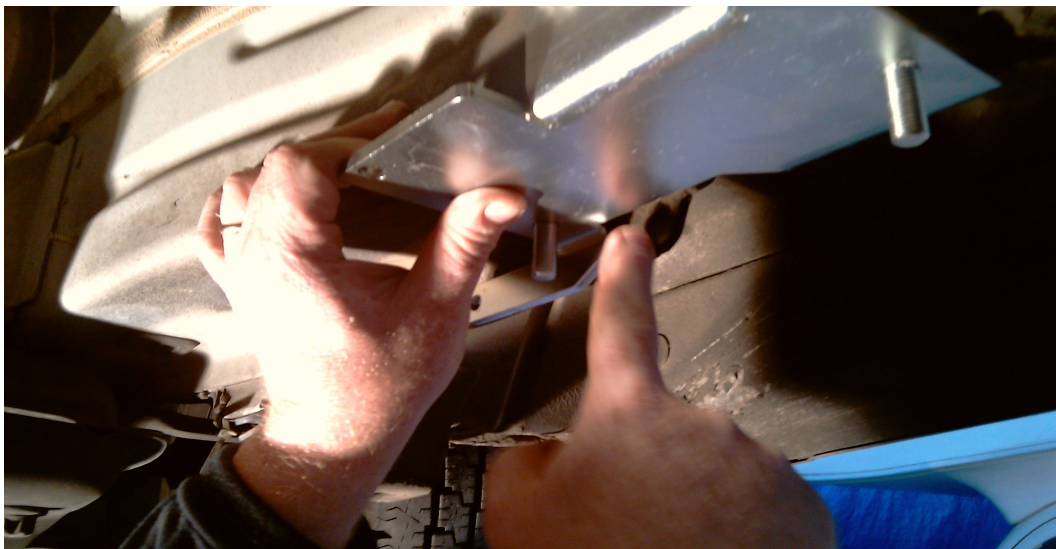
Front left adapter Ducato x250

Step 1: Use the same procedure of the right adapter

Step 2: Place the clamp between the tank and the chassis, pay attention to the pipes (in some cases it may be necessary to slightly loosen the screws fixing the tank to move it away from the chassis of 1-2 cm).



Step 3:



In rare cases it may be necessary to grind, for the correct rotation of the highjack

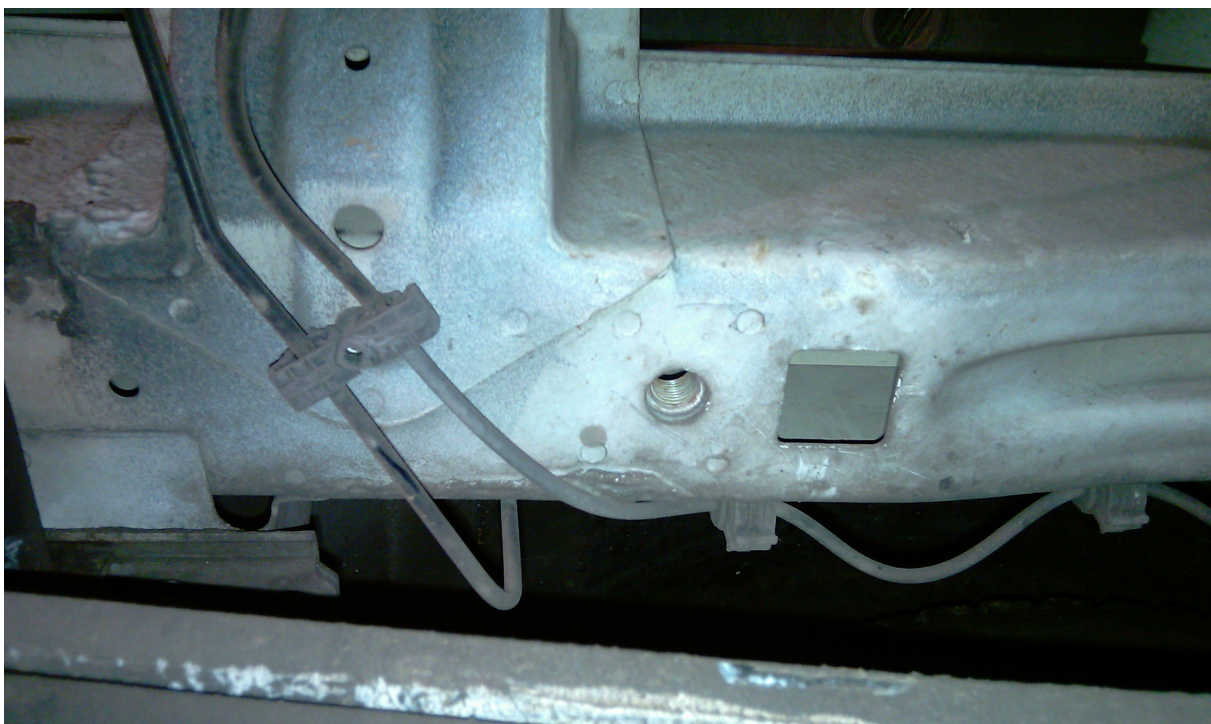
**JACK WITH MOTOR TO THE OUTSIDE OF THE VEHICLE AND
ROTATION FRONT**

IS POSSIBLE FIX THE REAR ADAPTER IN FRONT OR REAR THE REAR AXLE

Rear adapter Ducato x250 (front the rear axle)

Step 1:

The rear adapter must be placed before the rear axle, at the point show in the photo



Rear adapter Ducato x250 (front the rear axle)

Step 2:



Insert and position the sealing plate (plate with **ONE HOLE**) then fix with the bolts (10x70 and 14x70).

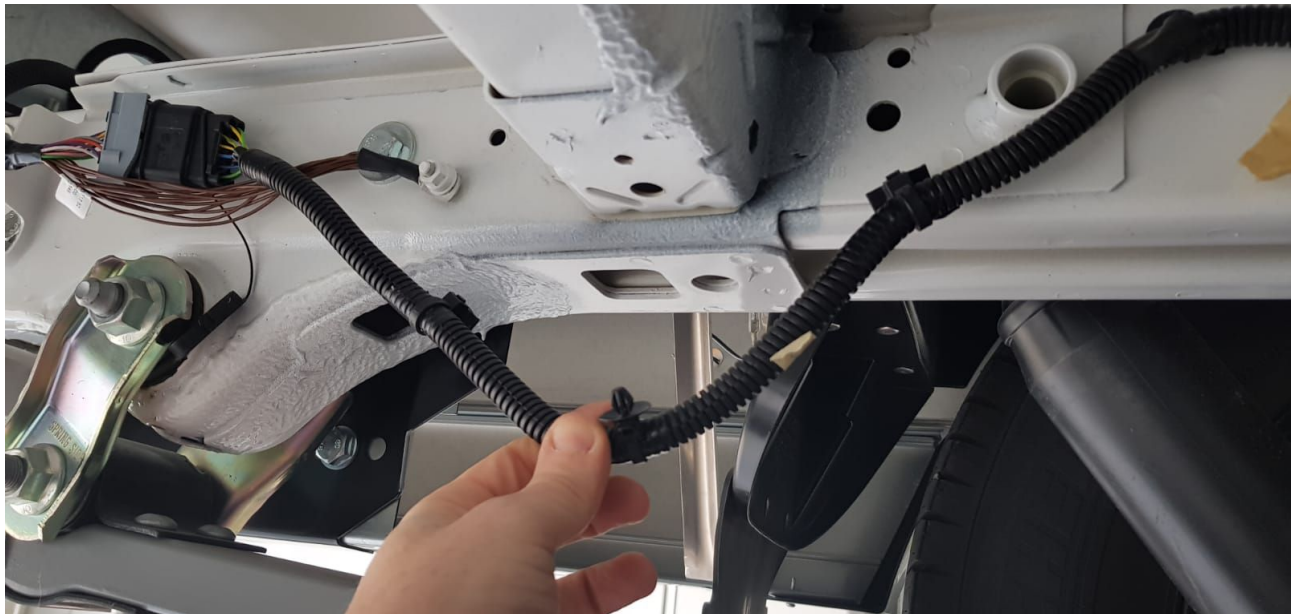
**BOTH REAR JACKS WITH ENGINE TO THE INSIDE OF THE VEHICLE
AND FRONT ROTATION**

Rear adapter Ducato x250 (rear the rear axle)

Step 1:

The rear adapter must be placed rear the rear axle at the point show in the photo, insert the special plates (with **TWO HOLE**) and pay attention at the electrical wiring, move and insert the adapter up it (see the photo)



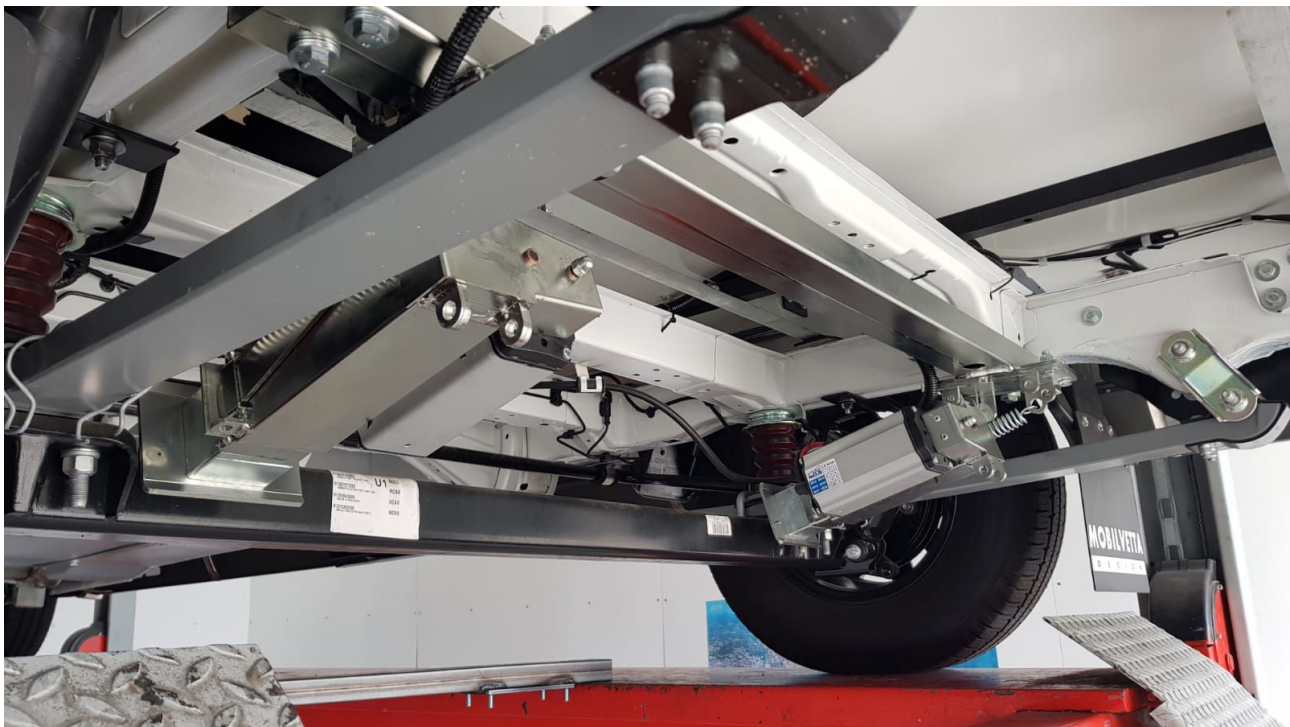
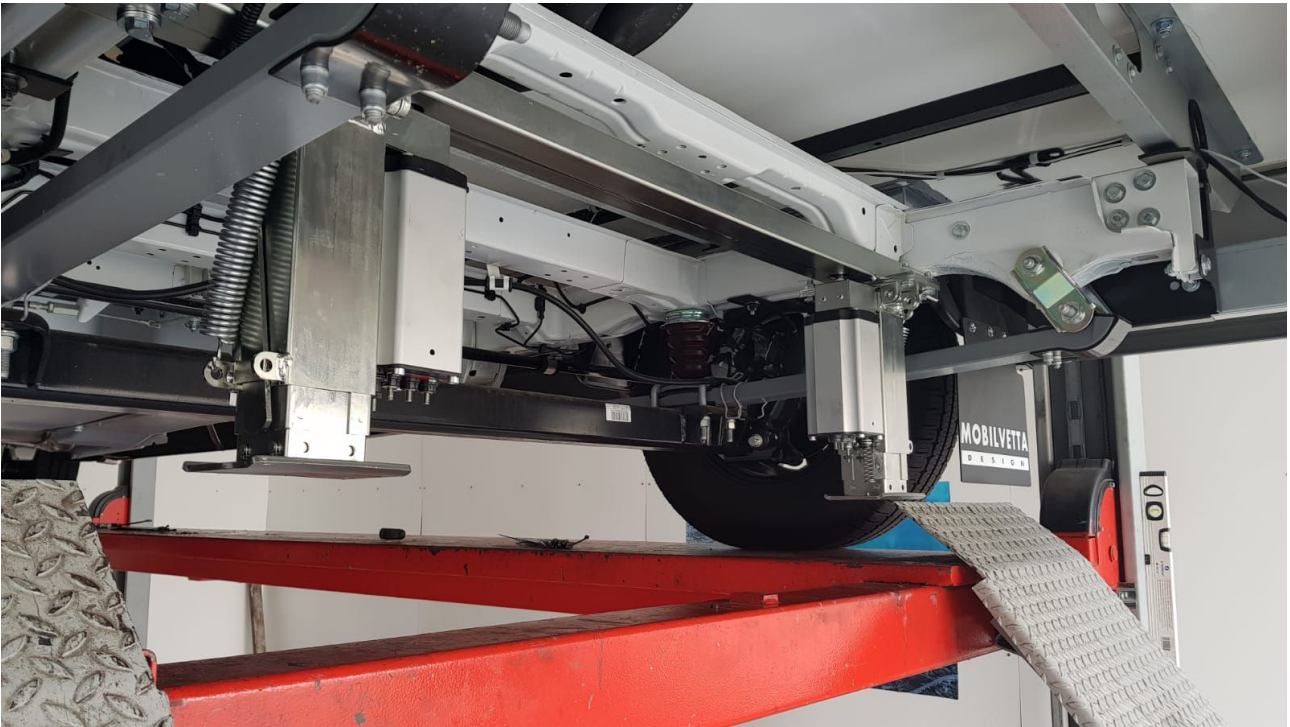


(remove the electrical wiring, insert the adapter up it)



Step 2:

Fix the adapter using the bolts supplied (4pc – 10x70), then fix the jacks.



**BOTH REAR JACKS WITH ENGINE TO THE INSIDE OF THE VEHICLE
AND ROTATION IN FRONT OR REAR**